

# *Glass Painting by - Meirav Sher*

During the last decade, Meirav Sher pioneered a new and innovative technique of glass painting, which can now be found in many fine projects worldwide, including high-end hotels, prestigious office buildings, and art collections. She was featured in several exhibitions on Saatchi-Art online gallery and was recognized in 2014 as 'Artist of the Day'. Her work walks the fine line between art and design.





## *Technical information*

Each piece is made on a 6 mm, extra clear, edge-polished glass. Sher uses Ferro's special ceramic powder, which is suited for glass and contains gold.

Once the painting process is done, the glass begins an overnight firing process at a high temperature in a kiln. During this procedure, the colors become integral with the glass and highly durable. Her new industrial kiln accommodates glass plates up to 150x130 cm. Custom-made brass hardware was designed especially for these artworks.



## *Nautilus Collection*

This design concept was inspired by the moment at sunset when the sun touches the sea. Sher finds an associational connection between her work and jewelry, which is why each piece is presented as a wall pendant.

Optional standard sizes:



40 cm / 15.7"

60 cm / 23.6"



80 cm / 31.5"



100 cm / 39.4"



*Please click links to*

*- Explore the series -*

*'The Vibrant Matter'*



*'Evolution of One's Self'*



*'Searching for Nautilus'*



*Coming soon..*

*'The Monochromatics' series*

*Click the picture to view*

*- Imagery for prints -*

*A large collection of artworks in HR files for licensing*



## *Zohar Medallions*



*"My artwork is eventually all about searching. The longing to achieve the sublime has been leading me throughout my life. I cherish those priceless moments of searching even though, most likely, the sublime can never really be achieved. Sometimes I feel the search is the goal itself."*

'Zohar medallions' is an additional design, adjusted particularly for pieces at the diameter of 40 cm / 15.7"





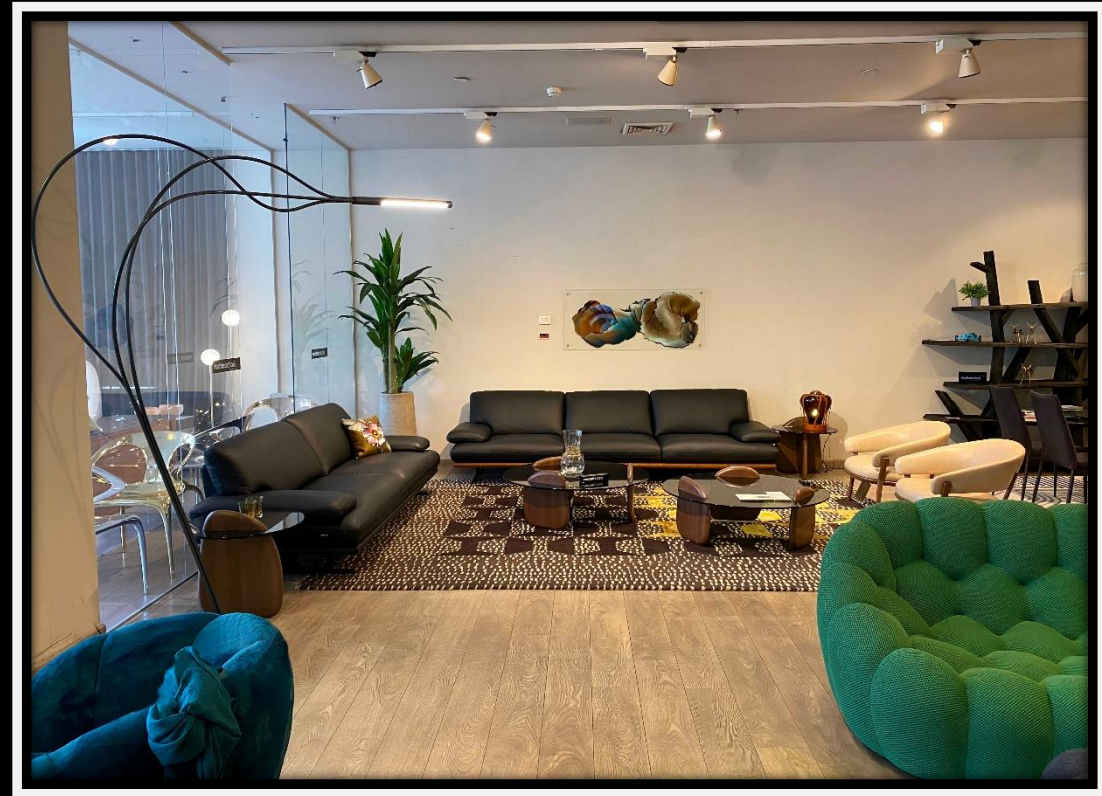
*Featuring*

*At*

*Pitaro-Hecht*

/

Home for international  
furniture brands



*Several well-known clients:*





*Meirav Sher*

*B.F.A – 'Bezalel  
Academy of Art and  
Design'*

*M.A. – Art therapy.*

*T.A university*



*Email – [meiravsher@gmail.com](mailto:meiravsher@gmail.com)*



*[www.meiravsher.com](http://www.meiravsher.com)*



*[meirav\\_sher](https://www.instagram.com/meirav_sher)*



*[Meirav Sher](https://www.facebook.com/MeiravSher)*